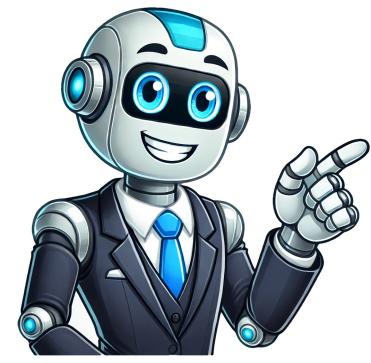


[Click Here](#)



Caution: Only certified personnel are allowed to assemble the battery cabinet. Minimum clearance of 150mm must be maintained between top of battery cells and next shelf. Battery assembly should be connected to the battery circuit breaker. Warning signs indicate potential electrical hazard, while caution signs warn of possible injury or death. Note and see signs provide additional information on specific topics. ****Technical Specifications**** The input voltage for the system ranges from 40 to 130 kV, with nominal voltages at 480 V, 50 kV, and other values. The input frequency is 60 Hz in all configurations. * Nominal current: varies by configuration (e.g., 148-597 A) * Max current: varies by configuration (e.g., 259-708 A) * Current limit: varies by configuration (e.g., 357-708 A) The system has a high power factor (>0.981) and is designed for battery recharge with a fully charged state. ****Battery Discharge Characteristics**** The nominal discharge current ranges from 901 to 3529 A, depending on the configuration. The maximum discharge current is higher (1091-3515 A). These values are based on rated load and nominal battery voltage. ****Cable Connection Instructions**** To connect the system: 1. Remove protection covers. 2. Connect AC input cables to terminals and grounding plate. 3. Connect AC output cables to terminals and grounding plate (for a single unit) or in parallel for two units. 4. Connect battery cables to terminals. 5. Secure cables to cabinet. For a dual-unit configuration, follow the same steps as above, but connect three load connectors from one unit's output terminals to the other unit's input terminals. ****Caution**** When connecting multiple units, ensure that cables have the same cross-section and length to prevent overheating or electrical issues. Caution: Ensure sufficient isolation of control and communication cables, they must be run separately from the power cables. Reinforce the insulation of these control and communication cables if any risk of contact with the power cable exists. A480V7 Page 16 Characteristics: - Relay Communication Card (SELV) - Optional Communication Cards (SELV or LV) - External Battery Circuit Breaker Cables (SELV) - General Shutdown Cable (SELV) For Connection of External Bypass Cabinet, CAN cables, and Exchange Current cables (ELV), PCAINTN.

Mge galaxy 5000 80 kva. Mge galaxy 5000 price. Mge ups systems galaxy 5000. Mge ups galaxy 5000 manual. Mge galaxy 5000 40kva. Apc mge galaxy 5000. Mge galaxy 5000 service manual pdf. Mge galaxy 5000 installation manual. Apc mge galaxy 5000 user manual. Mge galaxy 5000 battery replacement. Apc mge galaxy 5000 service manual. Mge galaxy 5000 60 kva. Mge galaxy 5000 manual. Apc by schneider electric mge galaxy 5000. Ups tuner mge galaxy 5000 download.