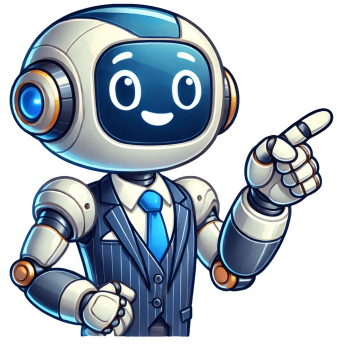


Continue





The integration of MyQ technology with a Genie garage door opener provides a convenient way to control and monitor your garage door from your smartphone or other smart devices. MyQ, developed by Chamberlain, offers remote access and control, adding an extra layer of security and convenience for homeowners. Although Genie does not natively support MyQ, effective workarounds can bridge these two technologies. To connect MyQ to your Genie garage door opener, you will need a MyQ Smart Garage Hub and follow specific steps to ensure compatibility. Before beginning, it's essential to understand the compatibility challenges between MyQ and Genie products. The MyQ Smart Garage Hub allows MyQ to communicate with most garage door opener brands, including Genie, enabling Genie's operation through the MyQ app from anywhere. To set up, you will need a MyQ Smart Garage Hub, a stable Wi-Fi connection in your garage, the MyQ app on your smartphone, and a functioning Genie garage door opener. Once you have these items ready, you can begin the integration process by installing the MyQ Smart Garage Hub, positioning it near the Genie opener and within range of your Wi-Fi network, and powering it on. Next, download the MyQ app, connect the hub to your home Wi-Fi network, and sync it with your Genie opener by preparing the opener, selecting "Add Garage Door" in the app, and following on-screen instructions to pair the devices. With the MyQ Hub connected to Wi-Fi and synced with your Genie opener, you can control and monitor your garage door remotely using the MyQ app. The MyQ Smart Garage Hub is the key to integrating MyQ with your Genie garage door opener, providing a convenient and secure way to manage your smart home setup. By following these steps, you can enjoy the benefits of remote access and control, adding an extra layer of convenience and security to your home. Connecting MyQ to your Genie garage door opener is a relatively straightforward process, but it's crucial to follow the steps carefully to ensure everything works smoothly. After pairing the two devices via the app, you'll be able to control your garage door from anywhere using your smartphone or tablet. Once connected, test the connection by opening and closing the door remotely to check signal strength and reliability. You can also enable notification settings in the app to keep track of your door's status, receive alerts when someone opens or closes the door, and even grant access to family members with their own devices. However, if you encounter any issues during the process, there are some common problems that might arise. For instance, if the MyQ hub isn't connecting to Wi-Fi, try moving the router closer to the garage or using a Wi-Fi extender to improve the signal strength. Similarly, if the opener isn't responding, check the position of the hub and re-pair it with the MyQ hub if needed. By following these steps and troubleshooting common issues, you'll be able to enjoy the benefits of connecting MyQ to your Genie garage door opener, including remote access, enhanced security, increased convenience, and compatibility with popular smart home systems. This integration transforms your Genie opener into a smart device that adds flexibility and control to your daily routine. The Benefits of Smart Garage Door Openers and Compatibility with Genie and MyQ Systems Given that a well-established brand known for producing high quality garage door openers, Genie has been innovating reliability and user-friendly designs since 1954. With a range of products from basic chain drive models to advanced belt drive systems with smart capabilities, the demand for integration with smart home technology is on the rise. MyQ is a leading smart home technology developed by Chamberlain Group that enables users to control and monitor their garage doors remotely via a smartphone app. It also integrates seamlessly with other smart home systems. For homeowners looking to integrate their garage systems into a broader smart home network, compatibility between Genie garage door openers and MyQ technology is crucial. Unfortunately, Genie garage door openers are not directly compatible with MyQ. However, alternative solutions exist for integrating non-MyQ compatible garage door openers, such as the use of a smart garage hub like the MyQ Smart Garage Hub or Genie Aladdin Connect. The MyQ Smart Garage Hub can add smart capabilities to a non-MyQ compatible garage door opener, including those made by Genie. It connects to your Wi-Fi network and allows you to control your garage door via the MyQ app. On the other hand, Genie Aladdin Connect is a smart garage door controller developed by Genie that offers similar functionalities to MyQ. Both systems allow remote control of garage doors via smartphone apps, send notifications about the status of your garage door, and integrate with other smart home devices and platforms. In conclusion, while Genie garage door openers may not be directly compatible with MyQ technology, alternative solutions exist for integrating them into a broader smart home network. By using a smart garage hub or Genie Aladdin Connect, homeowners can enjoy the benefits of smart garage door openers and seamless integration with their smart home systems. Smart garage door openers provide unparalleled convenience by allowing remote control over your garage door, eliminating worries about whether it was left open. With smart technology, you can monitor your garage door's status in real-time, receive notifications for unauthorized access, and track usage patterns through activity logs. Integrating your garage door opener with your smart home system streamlines daily routines, such as automatically turning on lights when the garage door opens or receiving reminders to close it when leaving home. Some smart garage systems also contribute to energy efficiency by automating the closing of your garage door, ensuring heating and cooling systems operate more efficiently. Before choosing a smart garage solution, consider compatibility with your current garage door opener, desired features like remote control or integration with other smart devices, and budget, including any additional accessories or installation fees. Researching different solutions and reading user reviews can provide insights into performance and reliability, highlighting aspects such as ease of installation, app functionality, and customer support. If unsure, consulting a professional installer or smart home technology expert can offer personalized recommendations based on your setup and preferences. While Genie garage door openers are not directly compatible with MyQ, workarounds like the MyQ Smart Garage Hub or Genie's Aladdin Connect offer alternative solutions for achieving smart functionality, providing benefits such as convenience, enhanced security, and integration with broader smart home systems. By evaluating compatibility options and specific needs, you can select the right smart garage solution for seamless integration and enhanced functionality.

Does myq work with genie pro. Does myq work with any garage door opener. Does myq work with genie 2028. How to connect myq to genie garage door opener. Does myq work with genie. Is myq compatible with genie garage door opener.